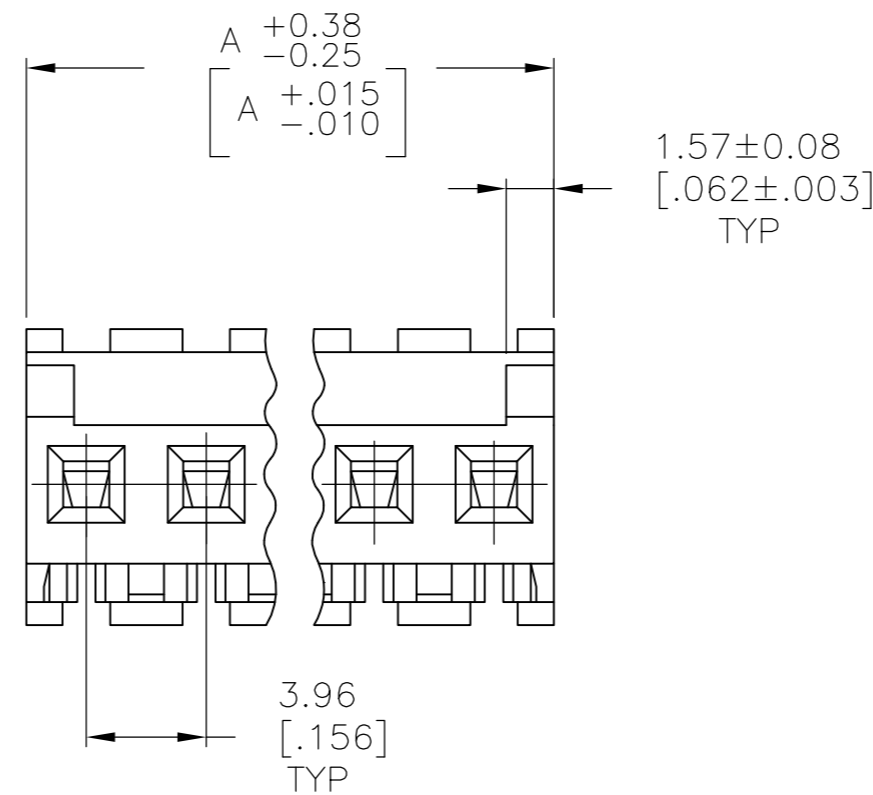
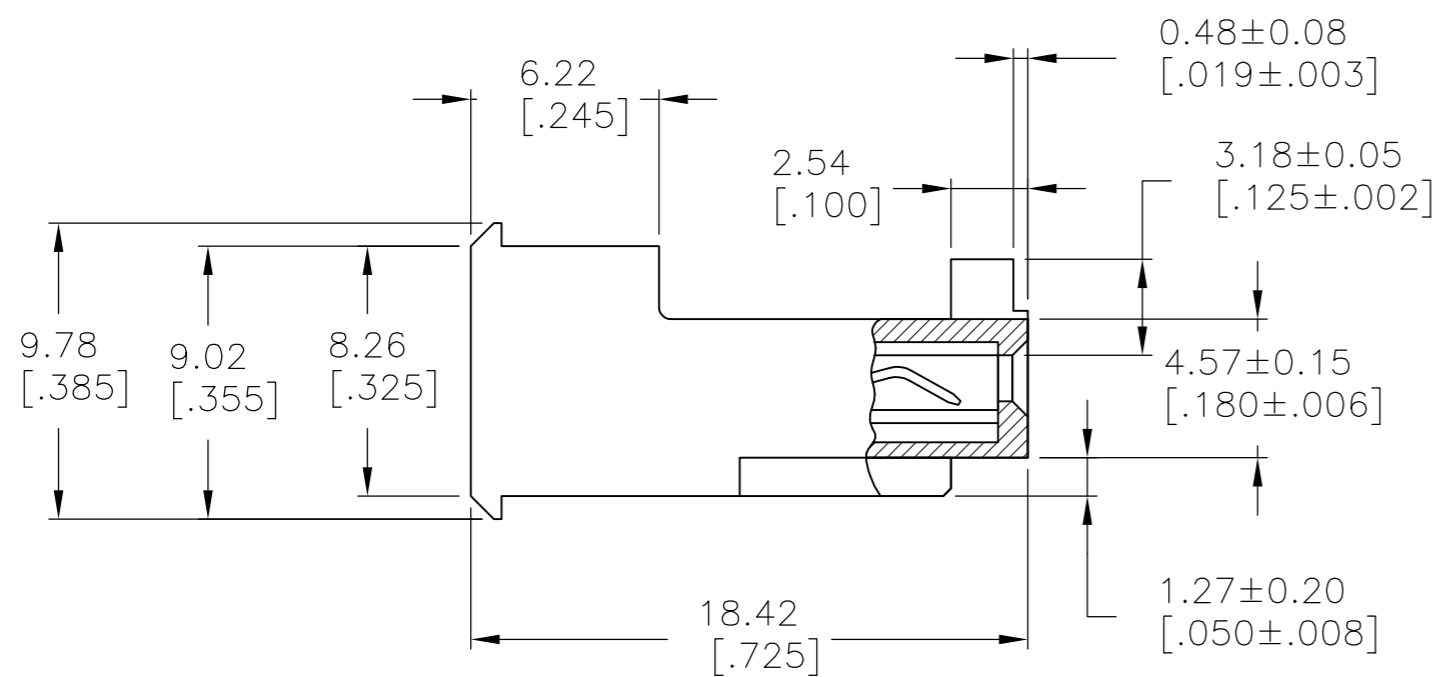
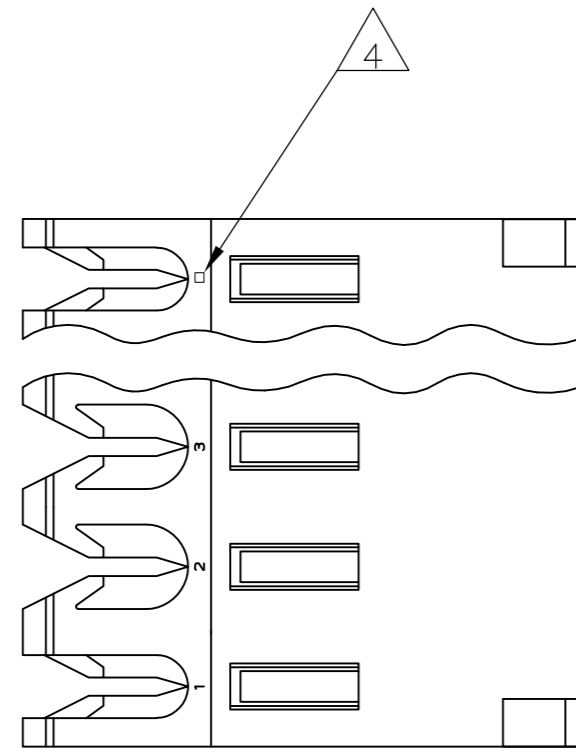


THIS DRAWING IS UNPUBLISHED. RELEASED FOR PUBLICATION
 © COPYRIGHT BY TYCO ELECTRONICS CORPORATION. ALL RIGHTS RESERVED.

LOC	DIST	REVISIONS					
CM	54	P	LTR	DESCRIPTION	DATE	DWN	APVD
		C		ECO-07-012861	08JUN07	KW	DB



1 MATERIAL: CONNECTOR - NYLON UL94V-2 (RED).
 CONTACTS - 0.30[.012] THICK COPPER ALLOY
 BRIGHT TIN-LEAD 0.00203[.000080] MIN THICK FOR CONTACTS
 644471-2 THRU 1-644471-4
 MATTE WHISKER MITIGATED TIN 0.00203[.000080] MIN THICKNESS
 OVER NICKEL UNDERPLATE FOR 3-644471-2 THRU 4-644471-4

2. CONTACTS ACCEPT 22 AWG WIRE WITH 2.41[.095] MAX INSULATION DIAMETER.
 3. CONTACTS MUST ACCEPT 1.14±0.03 [.045±.001] SQUARE POST AND REMAIN LOCKED IN POSITION.

4 IDENTIFICATION NUMBER FOR LAST CIRCUIT MAY NOT APPEAR ON ALL ASSEMBLIES.

5. DIMENSIONS IN BRACKETS ARE IN INCHES.

6. HOUSING FEATURES ARE: FEED-THRU WITHOUT LOCKING RAMP AND WITH POLARIZING TAB.

55.47	[2.184]	14	4-644471-4
51.51	[2.028]	13	4-644471-3
47.55	[1.872]	12	4-644471-2
43.59	[1.716]	11	4-644471-1
39.62	[1.560]	10	4-644471-0
35.66	[1.404]	9	3-644471-9
31.70	[1.248]	8	3-644471-8
27.74	[1.092]	7	3-644471-7
23.77	[.936]	6	3-644471-6
19.81	[.780]	5	3-644471-5
15.85	[.624]	4	3-644471-4
11.89	[.468]	3	3-644471-3
7.92	[.312]	2	3-644471-2
55.47	[2.184]	14	1-644471-4
51.51	[2.028]	13	1-644471-3
47.55	[1.872]	12	1-644471-2
43.59	[1.716]	11	1-644471-1
39.62	[1.560]	10	1-644471-0
35.66	[1.404]	9	644471-9
31.70	[1.248]	8	644471-8
27.74	[1.092]	7	644471-7
23.77	[.936]	6	644471-6
19.81	[.780]	5	644471-5
15.85	[.624]	4	644471-4
11.89	[.468]	3	644471-3
7.92	[.312]	2	644471-2
DIM A		NO OF CIRCUITS	PART NO

METRIC

THIS DRAWING IS A CONTROLLED DOCUMENT.

DWN B. LEWIS 12 FEB 91	Tyco Electronics Corporation Harrisburg, Pa 17105-3608	NAME	MTA 156 CONNECTOR ASSEMBLY, 22 AWG, STANDARD		
CHK R. SWING 12 FEB 91		PRODUCT SPEC	108-1051		
APVD D.R. CLARK 20 FEB 91		APPLICATION SPEC	114-1020		
MATERIAL		WEIGHT	SIZE	CAGE CODE	DRAWING NO
		A2	00779	C=644471	
FINISH		SCALE	SHEET	OF	REV
		4:1	1	1	C

CUSTOMER DRAWING